

Schwingenspannungen on R418 (AM+FM), R403(FM)
Oscillator grid bias at R418 (AM+FM), R403(FM)

Bereich	fmin.	f.m.	fmax.	4MHz/Mc
FM	1,7V	1,8V	1,3V	4V
AM	14,0V	12,0V	9,0V	—
M.	7,5V	6,0V	5,0V	—

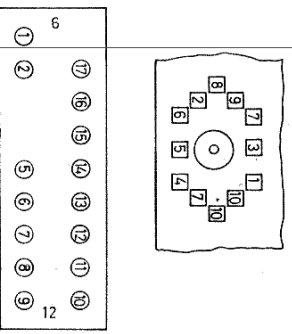
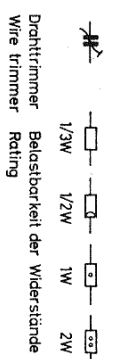
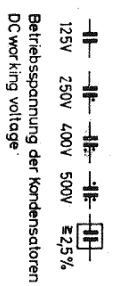
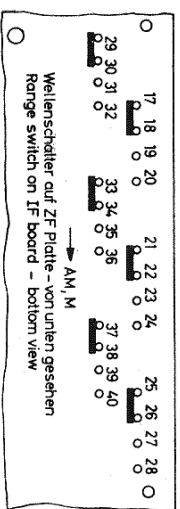
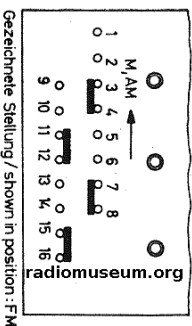
Bereiche	Ranges
FM 88-108 MHz	88 - 108 Kc
AM 519-1640 KHz	519 - 1640 Kc
M 2,15 - 2,75 MHz	2,15 - 2,75 Mc

Z F	I F
AM 460 KHz	460 Kc
AM 10,7 MHz	10,7 Mc
FM 87 MHz	87 Mc

Spannungen gemessen mit Röhrenvoltmeter (R410(K)) bei abgefehltem Relais und (R5) oder 12,5V Batteriespannung.
Voltages measured with relay not in operating, with 12,5V (R410(M)) on 6,5 or 12,6V battery voltage.

Bezeichnungserklärung	Legende
A 401 Abschaltrelais	Stop relay
E Automatschalter	Start switch
B Empfindlichkeitschalter	Sensitivity switch
K 401 Kupplungsrelais	Coupling relays
U Endumschalter	Tuning direction reser- ving switch

Spannungsumschalter:	
--- 6V	im Empfängerteil: I
+++ 12V	im Transistorteil: II
--- + + +	Voltage conversion switch: on receiver unit: I
--- + + +	on transistor unit: II
.....	Minuspol der Batterie an Messer/Batterie nega- live pole to ground
.....	Pluspol der Batterie an Messer/Batterie posi- tive pole to ground



0001 μF = 1T = 1nF = 1000 pμF
Änderungen vorbehalten!
Modifications rights reserved!