

Service  
Service  
Service



REFLEX ACTION

Domestic Appliances and Personal Care

# Service Manual

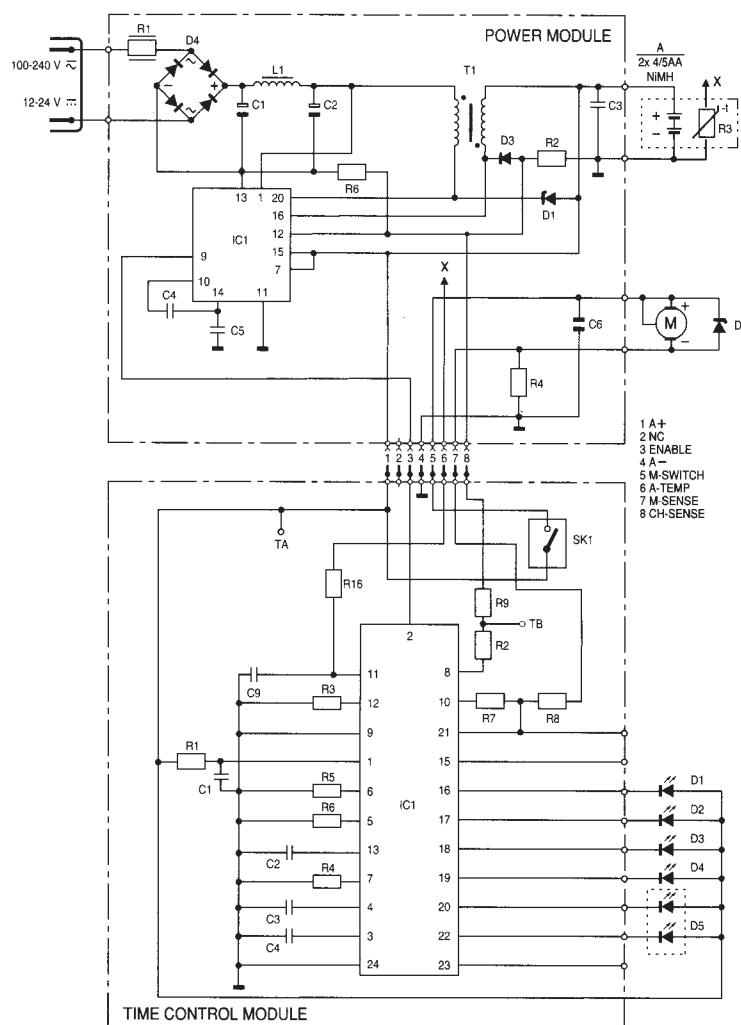
## TECHNICAL DATA

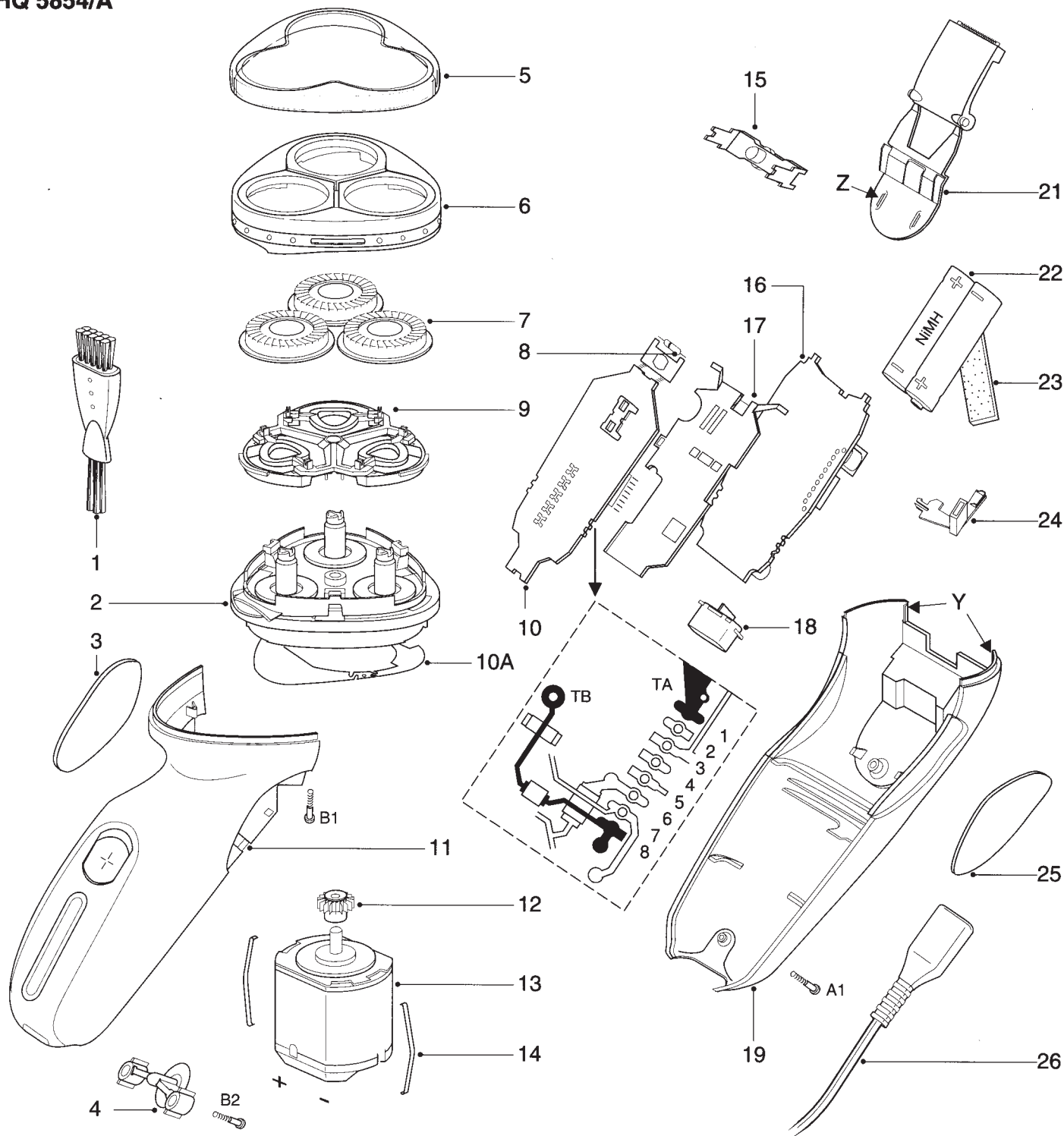
Input voltage	: 100-240 V $\sim$
	: 12-24 V $\equiv$
Motor voltage	: 2.4 V $\equiv$
Motor current	: approx. 420 mA
Cells	: 2x 4/5AA NiMH
Cell capacity	: 900 mAh
Charging system	: S.O.P.S.
Charging time	: 60 mins.
Charging current	: voltage/time dependent
Charge indicators	: 4x LED green
	: 1x duoLED red/green
Comfort control	: 9 settings
Shaving heads	: 3x HQ5

Screwdriver T8	4822 395 50263
Car flex	4822 321 10368

For more information see CIRRUS NiMH Circuit  
Description 4822 729 21675

MSH CODING  
8855 854 00000 HQ 5854





- |     |                |                       |
|-----|----------------|-----------------------|
| 1   | 4822 479 30183 | cleaning brush        |
| 2   | 4822 522 10512 | hair chamber complete |
| 3   | see item 25    |                       |
| 4   | 4822 256 92354 | holder                |
| 5   | 4822 441 11578 | protecting cap        |
| 6   | 4822 441 11582 | adj. head housing     |
| 7   | 4822 690 30481 | HQ5 shaving head      |
| 8   | 4822 130 32173 | OF217 diode           |
| 9   | 4822 404 40855 | retaining bracket     |
| 10  | 4822 214 11264 | control module        |
| 10A | 4822 466 10937 | sealing plate         |
| 11  | 4822 441 12049 | housing               |
| 12  | 4822 522 33605 | pinion                |
| 13  | 4822 361 21783 | motor                 |
| 14  | 4822 492 71735 | motor clamp           |

- |    |                |                        |
|----|----------------|------------------------|
| 15 | 4822 256 92352 | holder                 |
| 16 | 4822 214 70627 | power module           |
| 17 | 4822 256 92356 | pcb holder             |
| 18 | 4822 268 10354 | inlet                  |
| 19 | 4822 442 01087 | cover                  |
| 21 | 4822 690 30479 | trimmer                |
| 22 | 4822 138 10609 | NiMH cell 4/5AA (pack) |
| 23 | 4822 466 91312 | foam plate             |
| 24 | 4822 256 92355 | battery clamp          |
| 25 | 4822 426 10052 | side panel (set)       |
| 26 | 4822 321 10095 | flex EU                |
|    | 4822 321 10096 | flex GB                |
|    | 4822 321 10097 | flex CDN               |
|    | 4822 321 10148 | flex AUS/NZ            |
|    | 4822 321 10344 | flex USA               |

- |   |                |                     |
|---|----------------|---------------------|
| A | 4822 502 30785 | orn.screw 1.8x10/T8 |
| B | 4822 502 30526 | s.t.screw 1.8x10/T8 |