



**Philips 6000 series 4K Ultra Slim Smart LED TV 43PUT6262 108 cm (43'') 4K Ultra HD LED TV Quad Core DVB-T/T2/C with Ambilight 2-sided and Pixel Plus Ultra HD**

**43PUT6262/12**  
**TPM17.7ELA**

## Service information

[Print this page](#)

[Back to Service Information](#)

**Reference no.: SCC\_I I4375**

## Symptom

TV is showing test pattern, repeating White, Red, Green, Blue for those TV use LGD cell or TV have backlight no picture or abnormal display use other cell

## Cure

**Affected Countries:** EU

**Affected Chassis:** TPL16.1E, QM17.3E, QM17.4E, TPM17.1E, TPM17.7E, TPM17.9E

**Affected CTNs:** Please refer to **Remark**.

**Info:** TV is showing test pattern (repeating White, Red, Green, Blue picture). Or have backlight no picture or abnormal display.

**Service action:** Fix on Fail

**Impact range:** before WK1724

**Prod. Cut-In Date:** 2017/6/14

### Solution:

**Call Centers:** Return the TV to repair center

**Home Repair:** Same solution as "Work Shops" steps

### Work Shops:

1. Replace with new FFC cable. (PN refer to **Remark1**, sample refer to **Remark2**)
2. Refer to sample for new wire assembly instructions for 43", 49", 55", 65". (**Figure**).
3. If symptom failure still persists, replace SSB.

## Remark 1:

Series	CTN	18nc & 12nc	Description
43" 6412	43PUS6412/05 43PUS6412/12	395G279X51HD550001	V-by-One FFC 51P 0.5mm 370mm+MT5596+207*
49" 6412/6482/7002	49PUS6412/05 49PUS6412/12 49PUS6482/05 49PUS6482/12 49PUS7002/62	395G279X51HD560001	V-by-One FFC 51P /0.5pith/MTK5596 207*19
55" 6412/6482	55PUS6412/05 55PUS6412/12 55PUS6482/05 55PUS6482/12 55PUS7002/62	395G279Z51HD600001 or 395G279H51HD600001	V-by-One FFC 51P /480mm/0.5pith/MTK5596/

65", 6412	65PUS6412/12, 65PUS6412/05, 65PUS6412/12_RU	395G279H51HD590001	V-by-One FFC 51P 580mm/0.5pith/MTK5596
49", 7502	49PUS7502/05, 49PUS7502/12	1.395G279W41HC240002 or, 395G279X41HC240002, 2.395G279A51HD060002 or, 395G279X51HD060002	1.V-by-One FFC 41P 0.5mm 410mm MT5596+240*, 2.V-by-One FFC 51p, 0.5mm, 320mm,MT559
55", 7502	55PUS7502/05, 55PUS7502/12	1.395G279A41HC290001 or, 395G279W41HC290001, 2.395G279A51HD570001 or, 395G279X51HD570001	1.V-by-One FFC 41p 0.5mm 430mm MT5596+240*, 2.V-by-One FFC 51p 0.5mm 360mm MT5596+240*
65", 7502	65PUS7502/05, 65PUS7502/12	1.395G279A41HC300001, 2.395G279A51HD580001	1.V-by-One FFC 41p, 0.5mm, 480mm, MT, 2.V-by-One FFC 51p, 0.5mm, 410mm, MT
55", 9002	55POS9002/05, 55POS9002/12	1.395G279A41HC260001 or, 395G279X41HC260001, 2.395G279A51HD390001 or, 395G279X51HD390001	1.V-by-One FFC 41P 260mm 0.5MM, 2.V-by-One FFC 51P 260mm 0.5MM
65", 8102	65PUS8102/12	1.395G279R41HC330000 or, 395G279X41HC330000, 2.395G279W51HD940000 or, 395G279X51HD940000	1.V-by-One FFC 41P 760mm 0.5MM,MT5596+240*, 2.V-by-One FFC 51P 670mm 0.5MM,MT5596+240*
43", 6162/6 262	43PUS6162/05, 43PUS6162/12, 43PUT6162/12, 43PUT6162/60, 43PUS6262/05, 43PUS6262/12	395G279A51HC870001 or, 395G279X51HC870001	V-by-One FFC 51P 310mm 0.5MM

	43PUT6262/12		
49", 6162/6 262	49PUS6162/05 49PUS6162/12 49PUT6162/12 49PUT6162/60 49PUS6262/05 49PUS6262/12 49PUT6262/12	395G279A51HC880001 or 395G279X51HC880001	V-by-One FFC 51P 370mm 0.5MM
49", 6262 (SDC)	49PUS6262/12 49PUT6262/12	395G279H0510020000 or 395G279W0510020000	V-by-One FFC 51P 630mm 0.5MM
50", 6162/6 262/ 6272	50PUS6162/05 50PUS6162/12 50PUT6162/12 50PUS6262/05 50PUS6262/12 50PUT6262/12 50PUS6272/05 50PUS6272/12	395G279A51HD41 or 395G279X51HD41	V-by-One FFC 51P 390mm 0.5MM
55", 6161/6 262/ 6272	55PUS6162/05 55PUS6162/12 55PUT6162/12 55PUT6162/60 55PUS6262/05 55PUS6262/12 55PUT6262/12 55PUS6272/05 55PUS6272/12	395G279W51HD610000	V-by-One FFC 51P 420mm 0.5MM
65", 6162/6 262	65PUS6162/05 65PUS6162/12 65PUT6162/12 65PUS6262/05 65PUS6262/12 65PUT6262/12	395G279H51HD620000 or 395G279W51HD620000	V-by-One FFC 51P 540mm 0.5MM
43", 6432/6 452	43PUS6432/12 43PUS6452/12 43PUS6401/12	395G279M51HD490000 or 395G279X51HD490000	V-by-One FFC 51P 380mm 0.5MM

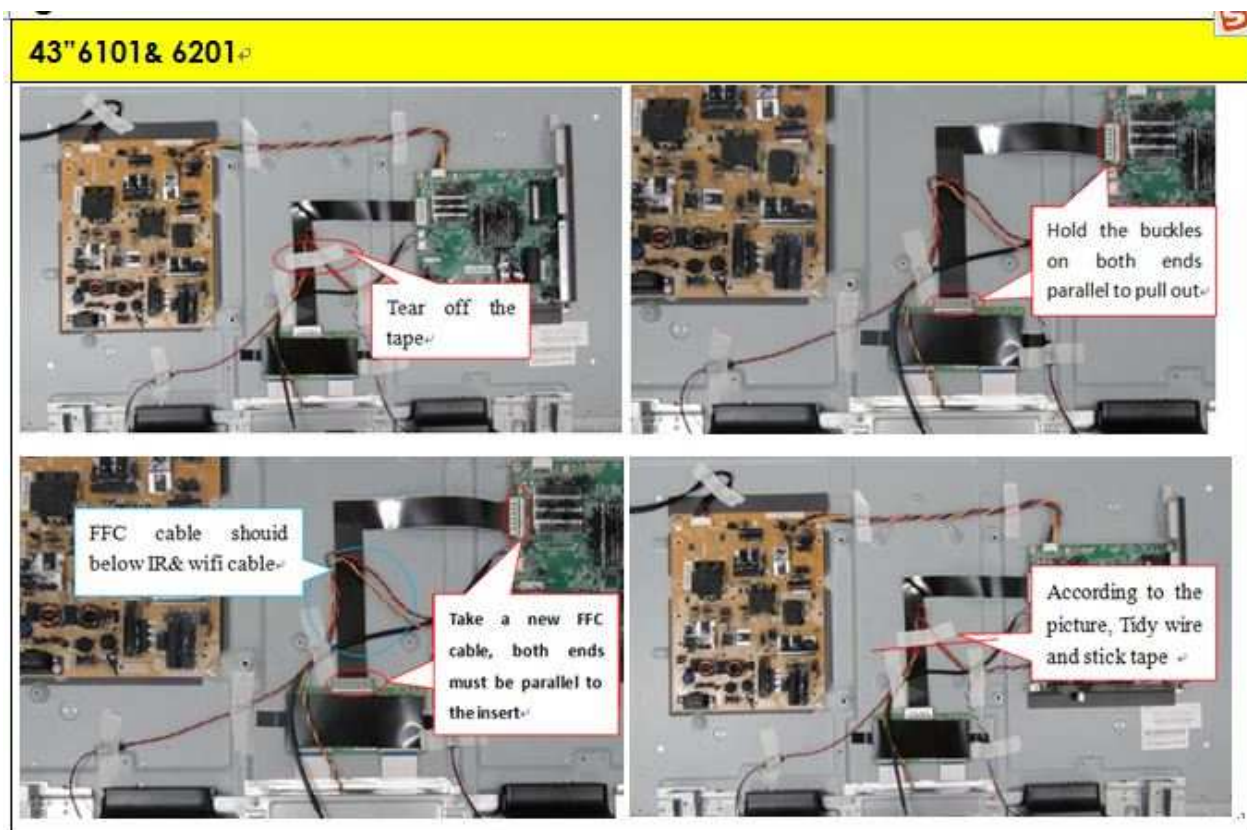
6401.,	43PUS6401/60., 43PUT6401/12.,		
43", 7202., 6501/6 551/, 6561/6 581.,	43PUS7202/12., 43PUS6501/12., 43PUS6501/60., 43PUT6501/12., 43PUS6551/12., 43PUS6561/12., 43PUS6581/12.,	1.395G279R41HC100001 or., 395G279X41HC100001., 2.395G279R51HC250001 or., 395G279X51HC250001.,	1.V-by-One FFC 41P 460mm 0.5MM., 2.V-by-One FFC 51P 370mm 0.5MM.,
49", 6432/6 452., 6401.,	49PUS6432/12., 49PUS6452/12., 49PUS6401/12., 49PUS6401/60., 49PUT6401/12.,	395G279W51HD510000 or., 395G279X51HD510000.,	V-by-One FFC 51P 500mm 0.5MM.,
49", 7272/, 6501/6 551/, 6561/6 581.,	49PUS7272/12., 49PUS6501/12., 49PUS6501/60., 49PUT6501/12., 49PUS6551/12., 49PUS6561/12., 49PUS6581/12.,	1.395G279W41HC110001 or., 395G279M41HC110001 or., 395G279R41HC110001., 2.395G279W51HC310001 or., 395G279R51HC310001.,	1.V-by-One FFC 41P 550mm 0.5MM., 2.V-by-One FFC 51P 460mm 0.5MM.,
55", 6432/6 452/, 6401.,	55PUS6432/12., 55PUS6452/12., 55PUS6401/12., 55PUS6401/60., 55PUT6401/12.,	395G279A51HD500000 or., 395G279X51HD500000.,	V-by-One FFC 51P 490mm 0.5MM.,
55", 7272/, 6501/6 551/, 6561/6 581.,	55PUS7272/12., 55PUS6501/12., 55PUS6501/60., 55PUT6501/12., 55PUS6551/12., 55PUS6561/12., 55PUS6581/12.,	1.395G279R41HC140002 or., 395G279X41HC140002., 2.395G279R51HC300002 or., 395G279A51HC300002.,	1.V-by-One FFC 41P 580mm 0.5mm MTK5593U+19., 2.V-by-One FFC 51P 500mm 0.5mm MTK5593U+19.,
43", 6101.,	43PUH6101/88., 43PUS6101/12., 43PUT6101/12., 43PUT6101/60.,	395G279W51NC81.,	V-by-One FFC 51P 360mm 0.5MM.,

43", 6201,	43PUS6201/12, 43PUT6201/12,	395G279M51NC850000 or, 395G279X51NC850000,	V-by-One FFC 51PIN 360mm 0.5MM,
49", 6101,	49PUH6101/88, 49PUS6101/12, 49PUT6101/12, 49PUT6101/60,	395G279W51HD35,	V-by-One FFC 51P 470mm 0.5MM,
55", 6101/6 201, (Non LGD),	55PUH6101/88, 55PUS6101/12, 55PUT6101/12, 55PUT6101/60, 55PUS6201/12, 55PUT6201/12,	395G279X51NC840000 or, 395G279X51NC80,	V-by-One FFC 51P 460mm 0.5MM,
55", 6101/6 201(LG D),	55PUH6101/88, 55PUS6101/12, 55PUT6101/12, 55PUT6101/60, 55PUS6201/12, 55PUT6201/12,	395G279W51NC82,	V-by-One FFC 51P 500mm 0.5MM,
65", 6121,	65PUS6121/12, 65PUT6121/12,	395G279M51NC830000 or, 395G279X51NC830000,	V-by-One FFC 51P 560mm 0.5MM,
49", 7101/7 181,	49PUS7101/12, 49PUS7101/60, 49PUS7181/12,	1.395G279A41HC120002, 2.395G279W51HC280001, , ,	1.FFC CABLE 41p 510mm 0.5MM, 2. FFC CABLE 51P 420mm 0.5MM,
55", 7101/7 181,	55PUS7101/12, 55PUS7101/60, 55PUS7181/12,	1. 395G279X41HC130001, 2. 395G279X51HC290002, ,	1.V-by-One FFC 41P 560mm 0.5MM, 2.V-by-One FFC 51P 480mm 0.5MM,
65", 7101,	65PUS7101/12, 65PUS7101/60,	1.395G279W41HC190001, 2.395G279W51HC530001, ,	1.V-by-One FFC 41P 650mm 0.5MM, 2.V-by-One FFC 51P 540mm 0.5MM,
49", 7011,	49HFL7011T/12,	1.395G279R51HC280001 or, 395G279W51HC280001 or, 395G279X51HC280001, 2.395G279A41HC120002 or,	V-by-One FFC 51P 510mm 0.5MM, V-by-One FFC 41P 510mm 0.5MM,

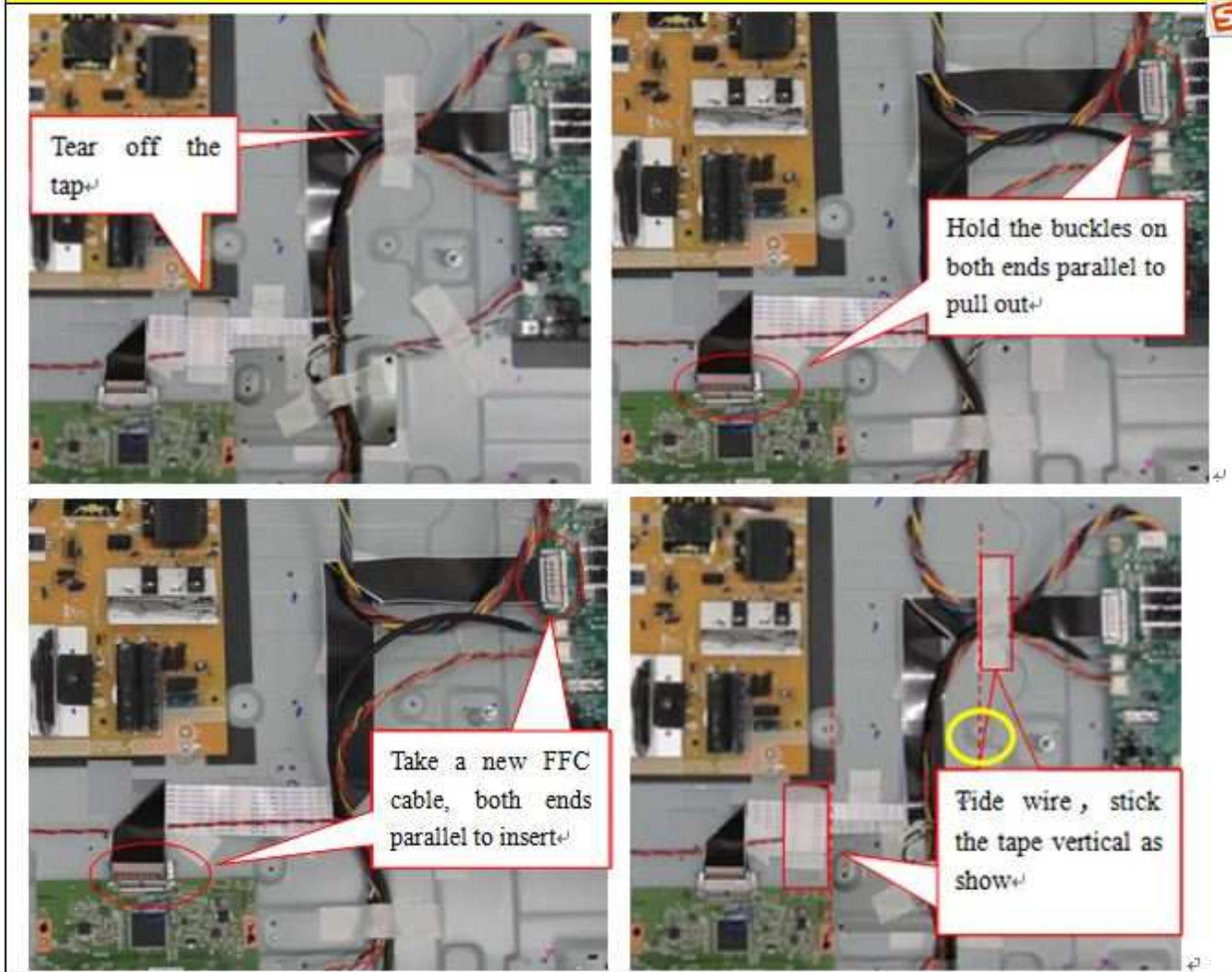


		395G279W41HC120002.	
55" 7011.	55HFL7011T/12. 7011.	1.395G279R41HC130001 or. 395G279W41HC130001 or. 395G279X41HC130001. 2.395G279A51HC290002.	1.V-by-One FFC 41P 560mm 0.5MM. 2.V-by-One FFC 51P 480mm 0.5MM.
65" 7011.	65HFL7011T/12. 7011.	1.395G279W41HC190001. 2.395G279W51HC530001. .	1.V-by-One FFC 41P 650mm 0.5MM. 2.V-by-One FFC 51P 540mm 0.5MM.
65" 6521.	65PUS6521/12. 65PUS6521/60.	1.395G279R41HC150001 or. 395G279W41HC150001. 2.395G279R51HC230001 or. 395G279W51HC230001.	1.V-by-One FFC 41P 640mm 0.5MM. 2.V-by-One FFC 51P 550mm 0.5MM.
75" 7101.	75PUS7101/12. 75PUS7101/60.	1.395G279A41HC160001. 2.395G279W51HC36.	1.FFC CABLE 41P 740mm 0.5MM. 2. FFC CABLE 51P 650mm 0.5MM.
40" 5011T.	40HFL5011T/12. 5011T.	395G179W51HC330001.	FFC CABLE 51P 400mm 0.5MM.
43" 5011T/ 5501.	43HFL5011T/12. 43PFH5501/88. 43PFS5501/12. 43PFT5501/12. 43PFT5501/60.	395G179A51HC420001 or. 395G179X51HC420001.	FFC CABLE 51P 310mm 0.5MM.
49" 5011T/ 5501.	49HFL5011T/12. 49PFH5501/88. 49PFS5501/12. 49PFT5501/12. 49PFT5501/60.	395G179A51HC440001 or. 395G179X51HC440001.	FFC CABLE 51P 420mm 0.5MM.
55" 5011T.	55HFL5011T/12. 5011T.	395G179M51HC450001 or. 395G179X51HC450001.	FFC CABLE 51P 450mm 0.5MM.

Figure 1:

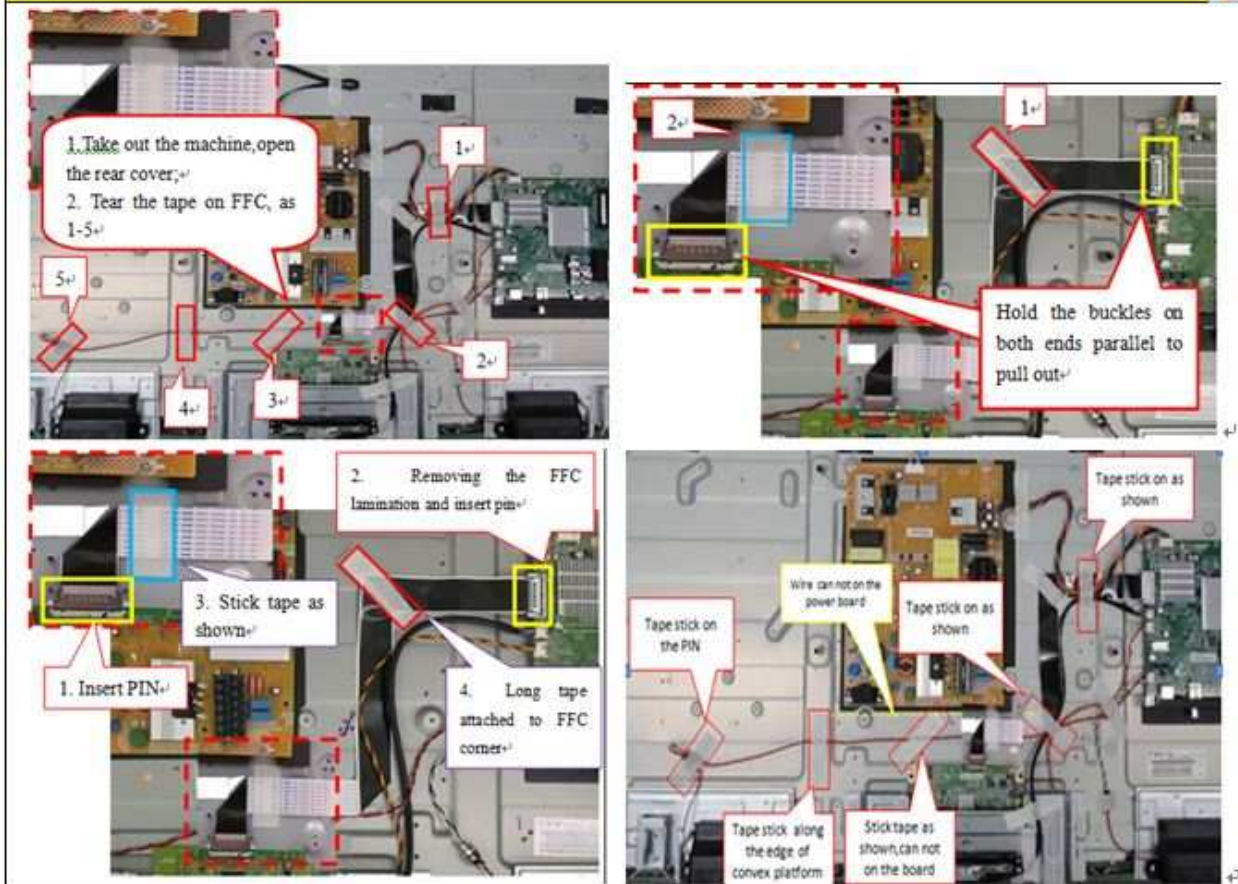


## 49" 6101

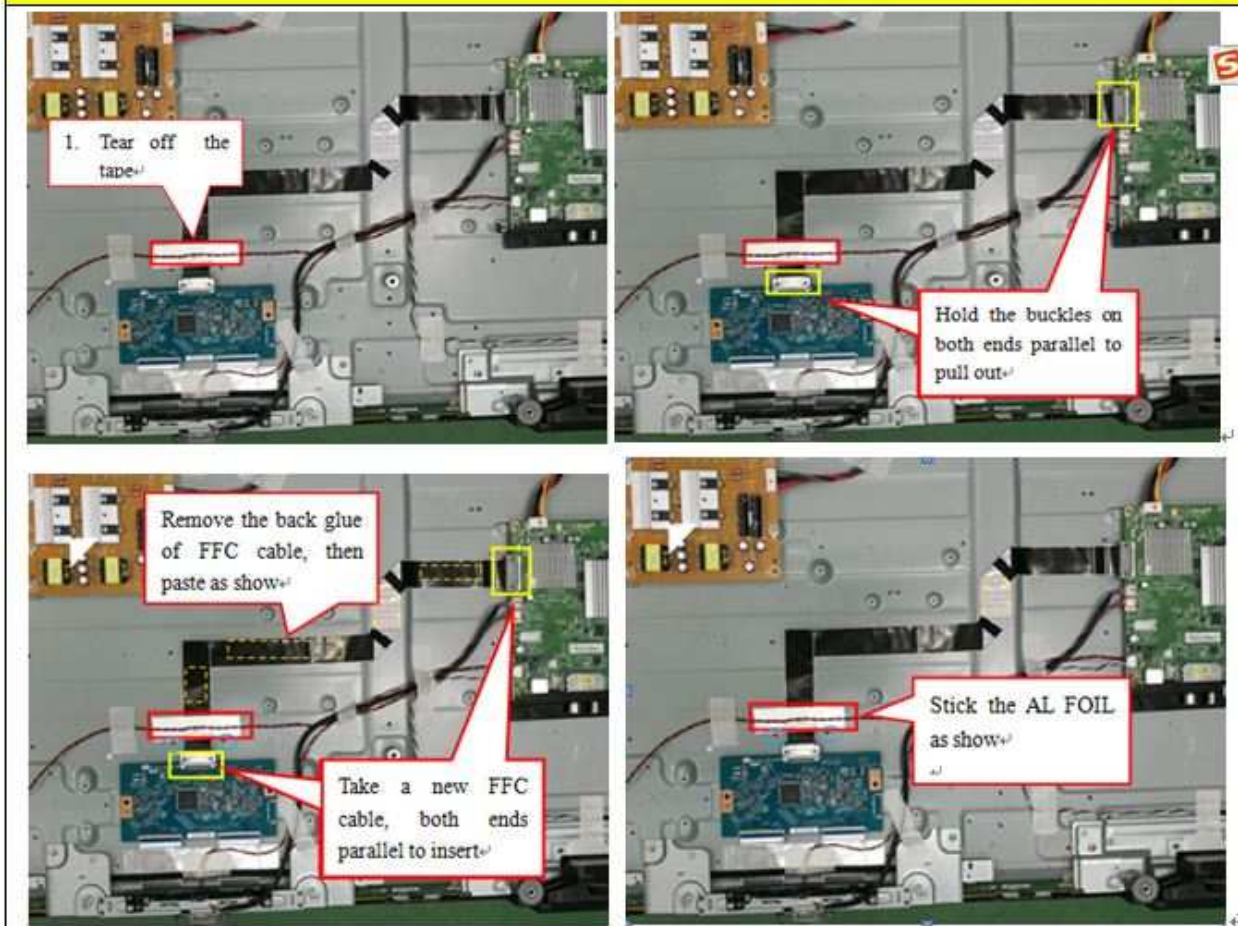




## 55" 6101&6201



## 65" 6121





**Remark2:** 1. It is strongly recommended to use the new version of the cable which can be identified by checking the print on the cable

C	60V	VW-1	WDK	AWM	20624	E310361	80C	60V	VW-1	WDK
C	60V	VW-1	WDK	AWM	20624	E310361	80C	60V	VW-1	WDK
C	60V	VW-1	WDK	AWM	20624	E310361	80C	60V	VW-1	WDK
C	60V	VW-1	WDK	AWM	20624	E310361	80C	60V	VW-1	WDK
C	60V	VW-1	WDK	AWM	20624	E310361	80C	60V	VW-1	WDK
C	60V	VW-1	WDK	AWM	20624	E310361	80C	60V	VW-1	WDK
C	60V	VW-1	WDK	AWM	20624	E310361	80C	60V	VW-1	WDK
C	60V	VW-1	WDK	AWM	20624	E310361	80C	60V	VW-1	WDK

2. Temporary (e.g. when the 105°C cable is out of stock) it remains possible to use the old 80°C cable

WM	20706	105C	60V	VW-1	GLD	E337139	AWM	20706	105C	60V	VW-1	GLD	E33
WM	20706	105C	60V	VW-1	GLD	E337139	AWM	20706	105C	60V	VW-1	GLD	E33
WM	20706	105C	60V	VW-1	GLD	E337139	AWM	20706	105C	60V	VW-1	GLD	E33
WM	20706	105C	60V	VW-1	GLD	E337139	AWM	20706	105C	60V	VW-1	GLD	E33
WM	20706	105C	60V	VW-1	GLD	E337139	AWM	20706	105C	60V	VW-1	GLD	E33
WM	20706	105C	60V	VW-1	GLD	E337139	AWM	20706	105C	60V	VW-1	GLD	E33
WM	20706	105C	60V	VW-1	GLD	E337139	AWM	20706	105C	60V	VW-1	GLD	E33
WM	20706	105C	60V	VW-1	GLD	E337139	AWM	20706	105C	60V	VW-1	GLD	E33
WM	20706	105C	60V	VW-1	GLD	E337139	AWM	20706	105C	60V	VW-1	GLD	E33

\*\*\*\*\* Internal info only, not to be released \*\*\*\*\*

#### Change History

Version	Date	Change History	Author
1.0	2016/12/22	Initial release	HweeMiang Lee
2.0	2017/3/15	Modify the work shop repair content	Doris Zheng
3.1	2017/07/12	Add 2K16/2k17 EU model import 105C	Jian Tain
3.2	2017/7/18	Update symptom & info	Jian Tian
3.3	2017/7/24	Add 105C sample in remark2	Jian Tian